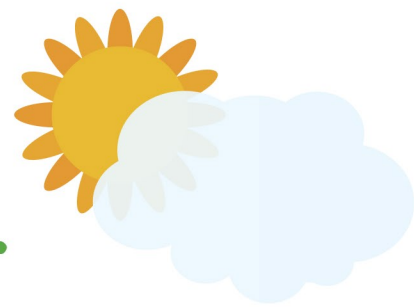


# Get Growing.



Your chapter is encouraged to try a new event and submit it on your upcoming chapter calendar: a Community Garden.

## Why a Community Garden?

Community Gardens are a great fit with WoodmenLife's National Community Focus of Fighting Hunger:

- Your chapter can donate the food to local food banks/pantries.
- It's a perfect project for JOIN HANDS DAY and Make A Difference Day. It's an opportunity for both young and old to be involved and work together on a project.



Growing and sustaining a community garden demonstrates our commitment to local communities and helping those less fortunate, and acts as a visible reminder of the good works WoodmenLife® does. These are spaces where neighbors and residents can come together to foster community and grow food.

## What does my chapter need to do right now?

If your members decide to start a community garden, you are encouraged to submit events for the Spring quarter by Dec. 31, 2015.

The next step is to start thinking about where the garden will be (Fraternal Outreach will be providing recommendations permission or lease agreements later.) Ideas for space include:

- Land around chapter hall
- Chapter member's property with a permission agreement
- Regional Community Garden may utilize a Youth Camp (with permission of the Fraternal Corporation)
- A vacant lot (contact your local municipal office to determine availability and permission.)

Additional considerations when selecting a garden site:

- Visibility
- Accessibility
- Size
- Condition of the land
  - Is there a water source?
  - Is the land sunny or shady?
  - Is there trash/broken glass, and other debris that will need to be cleaned up?
  - Do you need to get the soil tested? (Your local extension office can help.)
  - Start thinking about what partnerships your chapter can develop to strengthen the connection between the garden and the community.

## What kind of support will there be from the Home Office?

- New signs are available – These cost \$60, but \$30 can be reimbursed through matching funds.
- Up to \$100 of additional funds are available for any chapter that submits a plan for a community garden and submits receipts and pictures of their garden.

Watch for a booklet filled with much more information, as well as seed packets to get you started, early in 2016.



Remember, the deadline to submit events for the Spring quarter is December 31!

